



www.doosan-iv.com

7 Series Forklifts

Electric 2.2 to 3.5 ton capacity



Lifting Your Dreams

About Doosan

Values that drive our future growth

Trust in people is the foundation on which Doosan has built its century of success

Doosan has always put 'People' first for the past 100 years, based on our management philosophies. - 'Business is not meant to make profits, but to help people grow.' (Late Too Pyung Park, First Chairman), and continues to spur corporate development with global competitiveness originated from human resources.

Doosan the oldest, but fastest growing company

Doosan has recorded the longest business history since its inauguration in 1896, but has grown at its most rapid pace for the past 10 years.

Doosan-the global Infrastructure Support Business (ISB) company

Doosan has created in excess of 90% of its sales within the ISB sector through vigorous reorganization of its business portfolio since 1998.

In the past, 70% of our business was concentrated on consumer goods, but we have successfully transformed our business DNA to the infrastructure support business that constructs and reinforces social infrastructure.

Doosan, surging as a global company

Doosan has become the global ISB leader based on its world class products and services.

In addition, as a true global company, Doosan's overseas employees encompass 50% of its human resources, and overseas sales take more than over 60% of the total sales.



Doosan Industrial Vehicle

Major global player in the infrastructure support business with a proud heritage

With a proud history dating back to 1937, when we first started out as Chosun Machinery, Doosan Industrial Vehicle has grown into Korea's largest machinery manufacturer, playing a leading role in the development of the industry in Korea.

Today, we are a global enterprise. We operate large-scale plants and sales subsidiaries both at home and overseas and maintain an operational network that spans continents.

Committed To Innovation

We remain committed to the advancement of new technologies and development of talented individuals, positioning us to respond effectively to the rapid changes taking place in the 21st century. Our mission is to strengthen our global position and become the industry leader well into the future.

Committed To Our Customers

We are committed to our customers, providing superior products and excellent services to go with them.

Our Promise

Doosan Industrial Vehicle will be the partner you can count on, always putting our commitment to you first.

Award-Winning Machines

Doosan currently holds a number of export, design & safety awards, including five Forklift Truck Association awards for Design Excellence.

LEADING THE WAY WORLD CLASS NEW 7 SERIES ELECTRIC TRUCK FROM DOOSAN.

The 7-Series of 4 Wheel electric truck, continue to follow the core Doosan tradition of delivering simple, powerful, performance, whilst most of all, delivering the best possible value for our customer.



B25X-7 Family

- 4-Wheel, 80 Voltage
- B22/ 25/ 30/ 35X-7, B25XL-7
- Reliable Curtis Controller (Drive & Pump)
- Enclosed Type Motor (Drive & Pump)

PRODUCTIVE.

POWERFUL & RELIABLE

Using the latest technology in AC control system of Curtis Controller provides an unbeatable combination of power, performance and functionality. And it deliver smooth and seamless power whilst offering the lowest possible energy consumption. Infinitely adjustable, optimized controllability and exceptional reliability makes the new 7-Series, the operator choice of truck.

INDUSTRY LEADING PERFORMANCE

The specially designed Electro-magnetic Auto Parking Brake (EPB) also gives the operator leaves seat, the truck's EPB is automatically applied with unlimited ramp-hold function. Lifting & Lowering functions and offers the highest levels of efficiency and productivity.



Stable, Intelligent and
Ease Serviceable
Curtis Controller



Simple, Powerful
Enclosed Type
Drive & Pump Motor



Specially Designed
Electro-magnetic
Auto Parking Brake



Easy to Read, Diagnosis,
and Performance Setting
Instrumental Panel



VERSATILE.

MAXIMIZED PRODUCTIVITY in Warehouse and Outdoor Applications.

7-Series electric forklifts are rated waterproof and safe for outdoor use. Sealed controller and enclosed type motors are applied, with all related wiring & connectors being silicon sealed. With brand new steer axle, which has been carefully designed to minimize the turning radius and can now achieve a superb 93.2° steer angle. Newly designed round shape of the counter-weight enables the truck to move comfortably in and out of narrow spaces, reducing damage costs.



Move Comfortably
Round Type Counter-Weight



Optimize Steer Axle to
Minimize Turning Radius



Waterproof and safe for
outdoor use



OPTIMUM VISIBILITY.

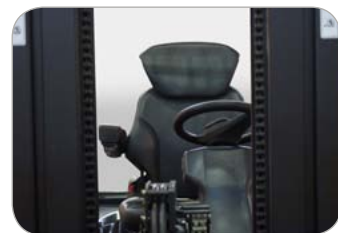
VISIBILITY issues play an important role in forklift truck-related accidents and often reduces the productivity of the operation.

The precise designed overhead guard profile with angled roof bars provides a clear view upward whilst ensure ultimate strength for safety.

Rear View Mirror or Panoramic Mirrors offer additional safety to reduce accidents and unnecessary damage to the truck, products or racking



Neatly arranged hydraulic hoses and chains provide clear front visibility through the wide view mast. All auxiliary hoses for attachments, such as integrated side-shift are aligned behind the mast chain and cylinders, which allows excellent forward visibility.



The Forklift Truck Association award-winning Doosan Rear Grab Handle with Horn make reversing more comfortable and safe.



SUPERB ERGONOMIC.

ERGONOMIC INTERIOR DESIGN

Operators perform best when their working conditions are perfect and the Doosan 7-Series has been designed to make this a reality.



Specially designed Convenience Box uses combinations of new and old favorites give great added value, such as large cup holder, USB port & 12V cigar jack, clip board holder.



Operators can control the truck's performance settings during operation, simply by navigating the instrumental panel.



The steering column and full suspension comfort seat, armrest and optional headrest are all fully adjustable to accommodate every operators individual preferences.

Many operators have the need to get on and off the truck regularly for many different reasons. Thus, we have designed a number of features to make this easier and safer than even before.

- Large Entry Step with an Anti-Slip Pattern
- Easy Grip Handle
- Large Uncluttered Floor Plate
- Angled Floor Plate and Large Pedals



Finger Tip Controls (Optional)
Optimal ergonomics giving optimal performance. Fast, precise and infinitely controllable makes operating the effortless and most efficient.



Hydraulic Levers
The direction switch is located on the hydraulic lever, meaning quick change of forward to backward.



STABLE.

MAXIMUM SAFETY & STABILITY

7-Series Electric Trucks are specially designed to contribute Safety & Stability driving. **The Guardian Stability System (GSS)** will dynamically protect the operator and the load to reduce risk of accidents. It not only meets all current and emerging demands for operator Safety & Stability in every application.

AUTOMATIC SPEED CONTROL

The angle sensing information controls the travel speed at sharp turning. It automatically reduces the travel speed to the optimum speed at the cornering.

TURTLE MODE

Pushing the slow travel button when the truck operates in warehouse, the truck travel speed will slow down to the previously set speed without lifting speed reduction, the truck will start.

LOW BATTERY ALARM

Lifting is limited to guide charging battery at 80% battery discharge during operation. This function can prevent sudden truck stop due to discharged battery.

OPERATOR SENSING SYSTEM (OSS)

Whenever the operator leaves the seat, the truck travel and mast lifting will stop.

OPTIONAL SPECS

- Decrease of travel speed up to 50% when mast raised above primary stage
- Forward tilt reduced 2 degree when mast raised above primary stage
- Alarm when mast raised above primary stage with mast tilted more than 2 degree
- Returns the mast to vertical position easily by tilt angle sensing (Auto Tilt Leveling)

SEAT BELT INDICATOR

When the driver starts the forklift, the warning indicator in the instrumental panel will flash if the seat belt is not fastened. It is only for warning so there is no interlock to truck operation.

UNLIMITED RAMP HOLD

Electro-magnetic Auto Parking Brake (EPB) prevent the forklift from Rolling back at a stop on an upslope. Operator can get-off truck easily without any braking on slope.

BRAKE OIL LEVEL INDICATOR

When the brake oil level in the brake oil reservoir is lower than minimum level, the low brake oil level indicator in the instrumental panel will flash.

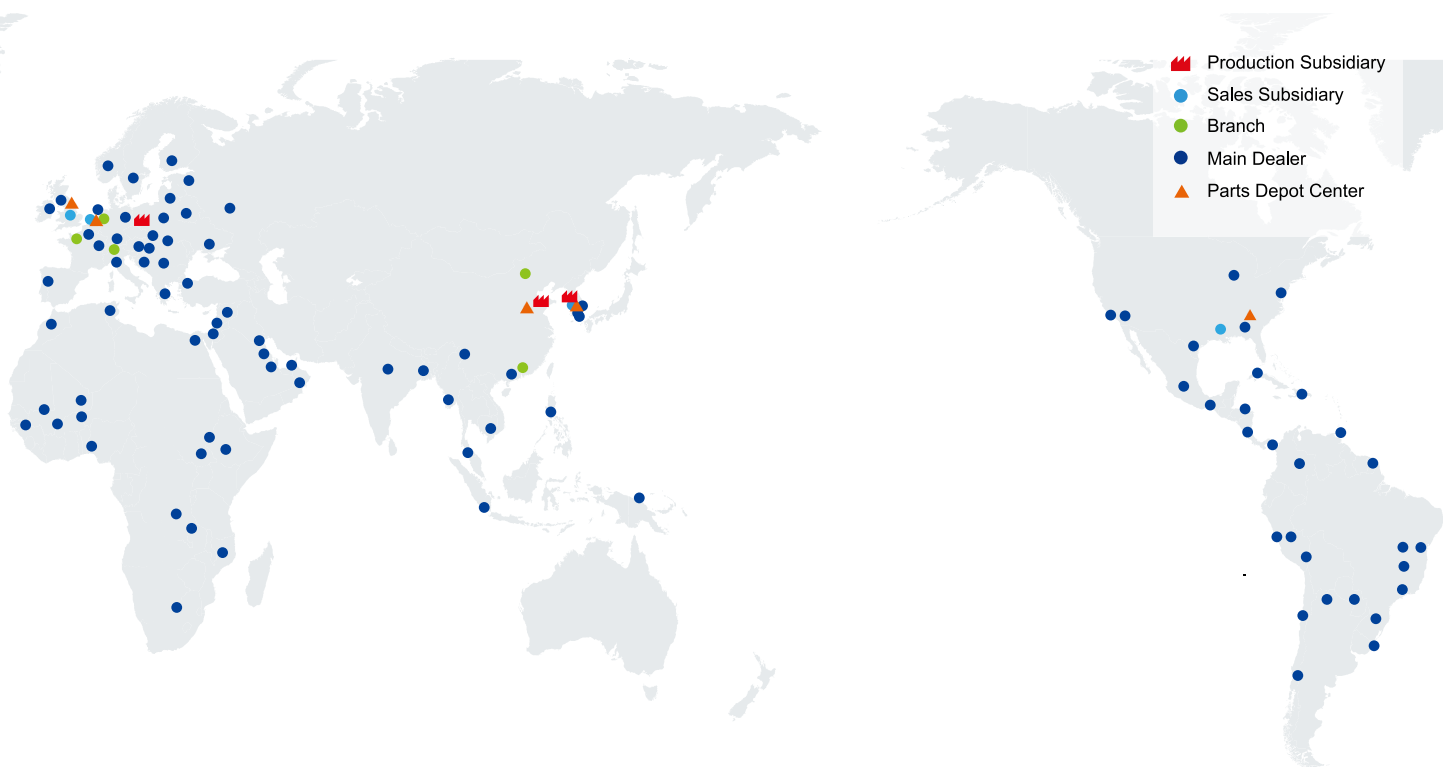
MAST LOWERING INTER-LOCK

On condition that an operator keys off or getting off seat after lifting or tilting mast, the hydraulic lift & tilt locking system will prevent motion of truck such as lifting tilting lowering and so on.

MAST TILT LOCK

Whenever the operator leaves the seat, the truck travel and mast lifting will stop.





Doosan Corporation Industrial Vehicle
 Web site : www.doosan-iv.com

2016 Jan

AUTHORIZED DEALER



7 Series Forklifts

Electric 2.2 to 3.5 ton capacity
B22/25/30/35X-7, B25XL-7



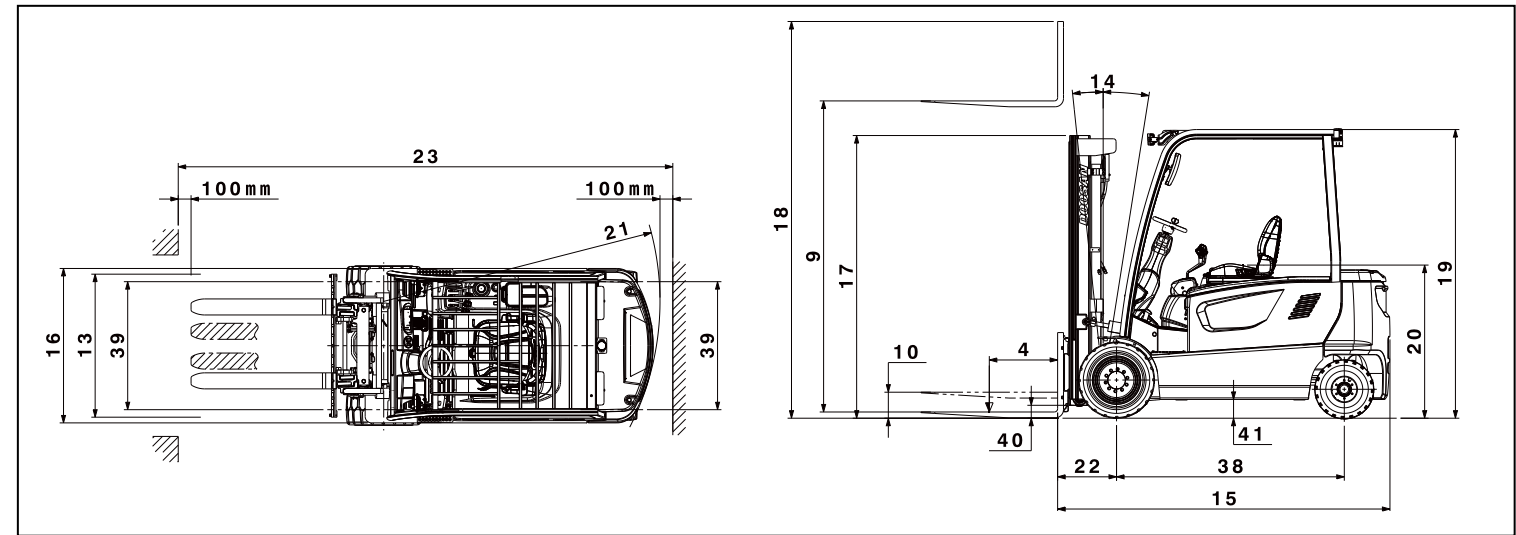
Lifting Your Dreams

GENERAL SPECIFICATION

CHARACTERISTICS	1		Doosan		Doosan		Doosan		Doosan	
	2		B22X-7		B25X-7		B25XL-7		B30X-7	
	3		at rated load center		kg		2,200		2,500	
	4		distance		mm		500		500	
	5		AC electric		AC electric		AC electric		AC electric	
	6		driver seated		driver seated		driver seated		driver seated	
	7		C=cushion, P=pneumatic, E=Solid		P, E		P, E		P, E	
	8		number, front/rear		x 2/2		x 2/2		x 2/2	
DIMENSIONS	9		with STD 2-stage mast		mm		3,230		3,230	
	10		Free lift		mm		147		147	
	11		ISO class		II		II		III	
	12		thickness x width x length		mm		40x100x1,050		40x100x1,050	
	13		fork spacing (min x max)		mm		272 x 1,035		272 x 1,035	
	14		forward / backward		deg		6/9		6/9	
	15		length to forkface		mm		2,329		2,329	
	16		overall width		mm		1,245		1,245	
	17		mast lowered height		mm		2,160		2,160	
	18		mast extended height		mm		3,990		3,990	
	19		overhead guard height (Cabin)		mm		2,185		2,185	
	20		seat height		mm		1,070		1,070	
	21		Outer turning radius		mm		1,950		1,950	
21		Inner turning radius		mm		348		348		
22		center of drive axle to fork face		mm		448		448		
23		pallet 1,000x1,200 crossways		mm		3,620		3,620		
23		pallet 800x1,200 lengthways		mm		3,799		3,799		
PERFORMANCE	24		travel		km/h		16/18		16/18	
	25		lift		mm/s		500/600		480/600	
	26		lowering		mm/s		490/460		490/460	
	28		at 1.6 km/h, loaded/unloaded		kg.f		1,768/1,675		1,768/1,675	
WEIGHT	32		with min. weight of battery		kg		4,419		4,623	
	33		loaded, front/rear		kg		5,807/813		6,275/848	
CHASSIS	34		unloaded, front/rear		kg		2,294/2,125		2,284/2,339	
	35		number of front/rear				2/2		2/2	
	36		front		23x10-12		23x10-12		23x10-12	
	37		rear		18x7-8		18x7-8		18x7-8	
	38		distance		mm		1,589		1,589	
	39		front		mm		998		998	
	39		rear		mm		998		998	
POWER TRAIN	40		at the lowest point		mm		130		130	
	41		at center of wheelbase		mm		140		140	
	42		hydraulic		hydraulic		hydraulic		hydraulic	
	43		auto-electric		auto-electric		auto-electric		auto-electric	
	45		DIN 43536 A		DIN 43536 A		DIN 43536 A		DIN 43536 A	
	45		80		80		80		80	
	45		500		500		600		600	
	45		620		620		775		775	
	45		1,560		1,560		1,870		1,870	
	46		1040 x 720 x 765		1,040 x 865 x 765		1,040 x 865 x 765		1,040 x 865 x 765	
47		10.0 x 2		10.0 x 2		10.0 x 2		10.0 x 2		
48		21		21		21		21		
54		MOSFET inverter		MOSFET inverter		MOSFET inverter		MOSFET inverter		
55		ODB		ODB		ODB		ODB		
57		183		193		193		207		
57		155		155		155		155		

Note : Specification values quoted in this specification sheet have been rounded. Performance may vary due to operation conditions. Products and specifications are subject to improvement and change without prior notices.

DIMENSIONAL DRAWING



MAST SPECIFICATIONS and RATED CAPACITIES

B22X-7, B25X-7, B25XL-7

Mast type	Maximum Fork Height	Maximum Lowered Height	Fully Extended Height	Free Lift	Rated Load Capacities							
					B22X-5, B25X-7, B25XL-7				B22X-7		B25X-5, B25XL-7	
					Tilt Angle				Load Capacities		Load Capacities	
					Single Pneu.		Single Solid		Single Pneu.	Single Solid	Single Pneu.	Single Solid
	FWD	BWD	FWD	BWD	LC500mm	LC500mm	LC500mm	LC500mm				
	deg	deg	deg	deg	kg	kg	kg	kg				
STD	2,950	2,020	4,200	147	6	9	6	9	2,200	2,200	2,500	2,500
	3,230	2,160	4,480	147	6	9	6	9	2,200	2,200	2,500	2,500
	3,500	2,410	4,755	147	6	9	6	9	2,200	2,200	2,500	2,500
	3,800	2,560	5,055	147	6	9	6	9	2,200	2,200	2,500	2,500
	3,950	2,635	5,205	147	6	9	6	9	2,200	2,200	2,500	2,500
	4,350	2,835	5,605	147	6	9	6	9	2,200	2,200	2,500	2,500
4,960	3,135	6,205	147	6	9	6	9	2,100	2,125	2,425	2,450	
FF	2,950	2,020	4,200	815	6	9	6	9	2,200	2,200	2,500	2,500
	3,230	2,160	4,480	955	6	9	6	9	2,200	2,200	2,500	2,500
	3,600	2,410	4,855	1,205	6	9	6	9	2,200	2,200	2,500	2,500
FFT	3,900	1,885	5,155	680	6	9	6	9	2,200	2,200	2,500	2,500
	4,290	2,020	5,560	815	6	9	6	9	2,200	2,200	2,500	2,500
	4,730	2,160	5,980	955	6	9	6	9	2,150	2,175	2,475	2,500
	4,805	2,165	6,055	980	6	9	6	9	2,150	2,175	2,450	2,475
	5,560	2,510	6,805	1,305	6	5	6	9	2,000	2,025	2,275	2,325
	6,010	2,660	7,255	1,455	6	5	6	9	1,875	1,950	1,700	2,250

B30X-7

Mast type	Maximum Fork Height	Maximum Lowered Height	Fully Extended Height	Free Lift	Rated Load Capacities					
					B30X-7					
					Tilt Angle				Load Capacities	
					Single Pneu.		Single Solid		Single Pneu.	Single Solid
	FWD	BWD	FWD	BWD	LC500mm	LC500mm				
	deg	deg	deg	deg	kg	kg				
STD	2,950	2,020	4,200	152	6	9	6	9	3,000	3,000
	3,230	2,160	4,480	152	6	9	6	9	3,000	3,000
	3,500	2,410	4,755	152	6	9	6	9	3,000	3,000
	3,800	2,560	5,055	152	6	9	6	9	3,000	3,000
	3,950	2,635	5,205	152	6	9	6	9	3,000	3,000
	4,350	2,835	5,605	152	6	9	6	9	2,950	2,975
4,960	3,135	6,205	152	6	5	6	9	2,800	2,825	
FF	2,950	2,020	4,200	820	6	9	6	9	3,000	3,000
	3,230	2,160	4,480	960	6	9	6	9	3,000	3,000
	3,600	2,410	4,855	1,210	6	9	6	9	3,000	3,000
FFT	3,900	1,885	5,155	685	6	9	6	9	2,900	2,900
	4,290	2,020	5,560	820	6	9	6	9	2,900	2,900
	4,730	2,160	5,980	960	6	9	6	9	2,850	2,875
	4,805	2,165	6,055	985	6	9	6	9	2,850	2,875
	5,560	2,510	6,805	1,310	6	5	6	9	2,300	2,700
	6,010	2,660	7,255	1,460	6	5	6	5	1,775	2,600

B35X-7

Mast type	Maximum Fork Height	Maximum Lowered Height	Fully Extended Height	Free Lift	Rated Load Capacities							
			with Load Backrest	with Load Backrest	B35X-7							
					Tilt Angle				Load Capacities			
					Single Pneu.		Single Solid		Single Pneu	Single Solid		
					FWD	BWD	FWD	BWD	LC500mm	LC500mm		
mm	mm	mm	mm	deg	deg	deg	deg	kg	kg			
STD	2,720	2,020	3,970	152	6	9	6	9	3,500	3,500		
	3,000	2,160	4,250	152	6	9	6	9	3,500	3,500		
	3,495	2,410	4,750	152	6	9	6	9	3,500	3,500		
	3,655	2,560	4,905	152	6	9	6	9	3,500	3,500		
	3,805	2,635	5,055	152	6	9	6	9	3,500	3,500		
	4,805	3,135	6,055	152	6	5	6	9	3,125	3,425		
FF	2,720	2,020	3,970	820	6	5	6	9	3,500	3,500		
	3,000	2,160	4,250	960	6	5	6	9	3,500	3,500		
	3,495	2,410	4,745	1,210	6	5	6	9	3,500	3,500		
FFT	3,555	1,885	4,805	685	6	9	6	9	3,400	3,400		
	3,960	2,020	5,210	820	6	9	6	9	3,400	3,400		
	4,380	2,160	5,630	960	6	9	6	9	3,300	3,400		
	4,820	2,330	6,070	1,130	6	5	6	9	3,175	3,400		
	5,205	2,510	6,455	1,310	6	5	6	9	2,575	3,300		
	5,655	2,660	6,905	1,460	6	5	6	5	2,000	3,200		

Note: These load capacities are based on the standard chassis without side shifter.

Specification values quoted in this catalog have been rounded.

Products and specifications are subject to improvement and change without notice.

Performance may vary due to operating conditions.

The performance shown represents nominal values obtained under typical operating conditions.

2016 Feb



Doosan Industrial Vehicles Seoul Office
Web site : www.doosan-iv.com

AUTHORIZED DEALER